

# 2

# Round we go!



## What's in this module?

### • Lexis

- means of transport
- signs in a city
- shops & services
- materials

### • Grammar

- comparative
- superlative

### • Spoken Interaction & Production

- compare means of transport
- ask for/give directions
- buy a train ticket
- compare houses

### • Writing

- tweets about getting around
- an article about a village in your country

### • CLIL (Art & Design): Landmarks

### • Values: Responsibility

1 train



2 taxi



3 bike/bicycle



4 tram



5 motorbike



## Means of transport See Guide p. 14

1 Listen and repeat.

2 Listen to the sounds. Which of the means of transport in Ex. 1 can you hear?



7 plane

6 cable car

8 bus

9 helicopter

10 car

11 ship

12 boat

**Note**

by  
 bike/bicycle/bus/  
 car/helicopter/  
 motorbike/plane/  
 ship/taxi/train/tram  
 on  
 a bike/bicycle/bus/  
 motorbike/plane/  
 ship/train/tram  
 (Also: on foot)  
 in  
 a car/helicopter/taxi

**Writing & Speaking**

3 a) Complete the table with the means of transport above.

land	air	water
bus		

b) Make sentences as in the examples.

You can travel on land by/on a bus.  
 You can travel in the air by/on a plane. You can travel on water  
 by/on a ship.

# 2a • Reading

## Reading

- 1  Listen to and read the tweets. Match the tweets (1-4) to the pictures (A-D).



**A**



**B**



**C**



**D**



**LONDON**

**Sally Shaw @theshawthing • 9:08 – 20 Oct**

Hi people! I'm on a red double-decker bus – the best way to see London's landmarks. Here's St Paul's Cathedral.



5 FOLLOWING

45 FOLLOWERS

**1 Dan Turner @DannyBoy06 • 10:27 – 20 Oct**

Try a bike tour, Sally. It's cheaper than taking a bus and more environmentally friendly. I think it's the quickest way to get around. #London

**2 Alfie Foley @theoneandonlyalfie • 10:52 – 20 Oct**

My favourite way is the cable car over the River Thames. You can see all the sights from up there. Definitely more exciting than buses or bikes! It is great! #London

**3 Bobby Danvers @bobnotdan • 12:15 – 20 Oct**

Sorry, but a cable car ride isn't as exciting as a helicopter tour! You can take some great pictures from up there. Can't wait to go again! #London

**4 Lily Piper @lilyofthevalley • 15:40 – 20 Oct**

How about a cruise along the River Thames? A boat's the most relaxing way to check out all London's tourist attractions. Bye for now! #London

 environmentally friendly • *amigo do ambiente*

get around • *circular*

sights • *atrações turísticas*

cruise • *cruzeiro*

check out • *observar*

2 Mark the sentences **R** (right), **W** (wrong) or **DS** (doesn't say).

1. It is Sally's first time in London.
2. Alfie prefers cable cars to buses.
3. Lily thinks river cruises are tiring.

3 Answer the questions.

1. How is Sally getting around London? \_\_\_\_\_
2. Who likes helicopter tours? \_\_\_\_\_

# Reading • 2a

Signs in a city See  Guide p.14

- 4  Match the signs (A-D) to the places you can see them (1-4). Listen and check.



1.  a library

3.  a tube station

2.  a park

4.  a house

## Speaking

- 5  **Think** Compare the means of transport in London to those in your village/town/city.

## Writing

- 6 Write a tweet about how to get around Lisbon like the ones in Ex. 1.

A graphic of a tweet form. On the left is a circular orange icon with a white bird. To its right is a light blue rounded rectangle containing a text area with a horizontal line and an '@' symbol, followed by three more horizontal lines. At the bottom right of the form are three icons: a person icon with '135', a speech bubble icon with '65', and a heart icon with '115'. To the right of these icons is a grey button with the text 'Tweet!' and a hand cursor icon pointing at it.

# 2b • Grammar

Comparative See  Guide p.15



We use the comparative form to compare two people, animals, places, things or objects.

### Short adjectives:

- adjective + **-er** (+ than + noun)  
The museum is **older than** the library.
- adjective of one syllable ending in vowel + consonant → **double the last consonant + -er** (+ than + noun)  
The museum is **bigger than** the gallery.

### Adjectives ending in consonant + -y:

adjective ending in consonant + -y → ~~y~~ + **-ier** (+ than + noun)  
A bus is **heavier than** a car.

### Long adjectives:

**more/less** + adjective (+ than + noun)  
Los Angeles is **more crowded than** New York.

We use:

- **as ... as** for two people, animals, things, etc. that are the same.  
His car is **as fast as** yours.
- **not so/as ... as** for two people, animals, things, etc. that aren't the same.  
Her house **isn't so/as big as** yours.

**Irregular forms:** good – **better**, bad – **worse**, much/many – **more**, little – **less**

## Grammar

**Adjectives** don't have plural form.

A **red bus**. **Red buses**.

They come:

- before a noun  
(a **tall building**)  
(NOT: ~~a building tall~~)

## 1 Read the theory. Then, write the comparative forms.

- |               |   |               |              |   |       |
|---------------|---|---------------|--------------|---|-------|
| 1. fast       | - | <u>faster</u> | 7. beautiful | - | _____ |
| 2. attractive | - | _____         | 8. easy      | - | _____ |
| 3. large      | - | _____         | 9. bad       | - | _____ |
| 4. thin       | - | _____         | 10. good     | - | _____ |
| 5. small      | - | _____         | 11. little   | - | _____ |
| 6. heavy      | - | _____         | 12. careful  | - | _____ |

## 2 Choose the correct item.

1. It is **more colder/colder** in Poland than it is in Spain.
2. Windsor Castle is as famous **as/than** Buckingham Palace.
3. Cities are **as busy/busier** than the countryside.
4. France is **big/bigger** than England.



### 3 Form complete sentences using comparative forms.

1. planes/fast/trains

Planes are faster than trains.

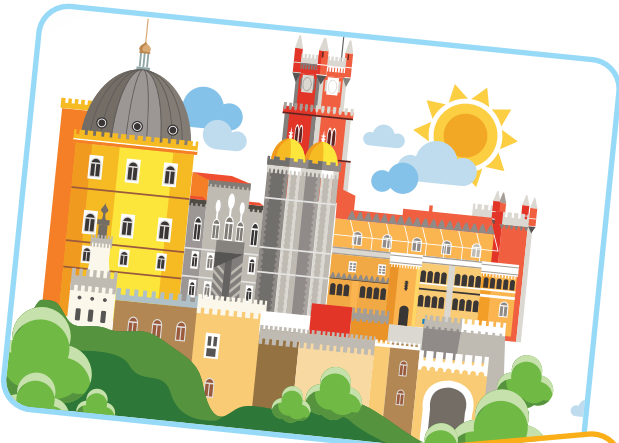
2. ships/big/boats

3. taxis/expensive/buses

4. helicopters/exciting/cars

5. bikes/slow/motorbikes

### 4 Look at the table and write sentences, as in the example. Tell your partner.



	New York, USA	Lisbon, Portugal
1. crowded	XX	X
2. interesting	X	XX
3. old	X	XX
4. expensive	XX	X
5. warm	X	XX

1. New York is more crowded than Lisbon.

Lisbon isn't as crowded as New York.

2. \_\_\_\_\_

3. \_\_\_\_\_

4. \_\_\_\_\_

5. \_\_\_\_\_